

## Roband Lamp Assemblies

Designed and manufactured in Australia, the range of Roband Lamp Assemblies are a stylish and essential tool to keep prepared food at the required serving temperature before the meal is delivered to the patron.

The range includes Quartz Heat Lamps that provide a combination of heat and light and are generally used in pass-through areas; Infra-red Heating Assemblies that utilise infra-red to provide variable and efficient heat and are used in the kitchen back-of house where heat but no illumination of the foods is required; and Fluorescent Lighting Assemblies that provide light and match the styling of the Heat Lamps and Heating Assemblies.

The range extends from standard models through to fabricator models. Standard models include control switches incorporated into the lamp body with a plug and cord arrangement so that the units can easily be installed and operated without an electrician's involvement. The fabricator models exclude all switches and controls and are supplied with flying leads that allow an electrician or fabricator to install the units and connect the assembly wires into the kitchen's own wiring and switch arrangement.

Roband quartz, infra-red and fluorescent lamp assemblies are manufactured from an exclusive extruded anodized aluminium section, specifically designed to breathe. Available in a variety of sizes, the Roband Lamp Assemblies will suit a wide range of applications.

All Roband Lamp Assemblies are designed to run at 220-240V 50-60Hz and are CE approved.



### Standard Models - for Quartz, Infra-red heating & Fluorescent units

The standard heat lamp assemblies (e.g. HQ900E, HE900 & HF900) come with a control box that houses the isolating on/off switch. They also feature a simple mounting system and come complete with a 10 Amp plug and cord.



### Fabricator Models - available for Quartz & Infra-red units

The heat lamp assemblies are also available without the control box and on/off switch (e.g. HUQ825E & HUE825) so they can be connected to a remote switch setup. The removal of the control box shortens the length of the lamp assembly accordingly. The optional mount kit (the round tubes pictured right) is ideal for installation.



# Quartz Heat Lamp Assemblies


Designed by Roband Australia, easy fit globes feature a protective quartz outer layer that encapsulates the inner globe allowing for easier handling. This secondary layer of glass also protects food from globe breakages by capturing the shards and eliminating the need for a traditional glass window in the base of the cover. Lamp replacement can now be performed without the need for an electrician and takes only seconds. The stylish and functional Roband quartz heat lamp assemblies provide a balance of heat and light to front or back of house applications. They are manufactured from exclusive extruded anodised aluminium, with a number of different sizes and options available to suit various requirements. All models come with a standard mount bracket. Optional mount kit is also available. See the following page.

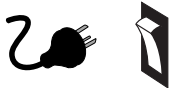
Showing wire guard open for easy replacement of the globe



## Specifications - Standard Models (Includes Control Box)

MODEL	DESCRIPTION	MOUNT TYPE	POWER Watts	LENGTH mm	LAMP CENTRES*	INCLUSIONS
<b>HQ450E</b>	1 lamp in body	Standard	350	450	N/A	Switch, plug & cord
<b>HQ900E</b>	2 lamps in body	Standard	700	900	400	Switch, plug & cord
<b>HQ1200E</b>	3 lamps in body	Standard	1050	1200	345	Switch, plug & cord
<b>HQ1500E</b>	4 lamps in body	Standard	1400	1500	345	Switch, plug & cord
<b>HQ1800E</b>	4 lamps in body	Standard	1400	1800	400	Switch, plug & cord
<b>HQ2100E</b>	5 lamps in body	Standard	1750	2100	400	Switch, plug & cord

\*Length between centres of each lamp. 220-240V 50-60Hz. 



HQ1200E pictured

## Specifications - Fabricator Models (No Control Box)

MODEL	DESCRIPTION	MOUNT TYPE	POWER Watts	LENGTH mm	LAMP CENTRES*	INCLUSIONS
COMPLETE WITH 1500 MM FLYING LEADS (A, N & E) FOR INSTALLATION AND REMOTE SWITCH						
<b>HUQ375E</b>	1 lamp in body	Standard	350	375	N/A	N/A
<b>HUQ825E</b>	2 lamps in body	Standard	700	825	400	N/A
<b>HUQ1125E</b>	3 lamps in body	Standard	1050	1125	345	N/A
<b>HUQ1425E</b>	4 lamps in body	Standard	1400	1425	345	N/A
<b>HUQ1725E</b>	4 lamps in body	Standard	1400	1725	400	N/A
<b>HUQ2025E</b>	5 lamps in body	Standard	1750	2025	400	N/A

\*Length between centres of each lamp. 220-240V 50-60Hz. 



HUQ1125E pictured

# Infra-Red Heating Assemblies

Roband infra-red heating assemblies are manufactured from an exclusive extruded anodized aluminium section, specifically designed to breathe. These units are designed for use at either front or back of house where more heat and no light is required. The heat is provided by a stainless steel element and an energy regulator is used on the standard units to precisely control the output, emitting a very even heat over the length of the warming area. All models come with a standard mount bracket. Optional mount kit is also available. See below.

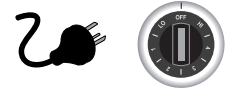
A variable control energy regulator is used to precisely control the output on standard models



## Specifications - Standard Models (Includes Control Box)

MODEL	DESCRIPTION	MOUNT TYPE	POWER Watts	LENGTH mm	INCLUSIONS
<b>HE900</b>	1 element	Standard	900	900	Energy regulator, plug & cord
<b>HE1200</b>	1 element	Standard	1200	1200	Energy regulator, plug & cord
<b>HE1500</b>	1 element	Standard	1500	1500	Energy regulator, plug & cord
<b>HE1800</b>	1 element	Standard	1800	1800	Energy regulator, plug & cord

220-240V 50-60Hz.



HE1200 pictured

## Specifications - Fabricator Models (No Control Box)

MODEL	DESCRIPTION	MOUNT TYPE	POWER Watts	LENGTH mm	INCLUSIONS
COMPLETE WITH 1500 MM FLYING LEADS (A, N & E) FOR INSTALLATION AND REMOTE SWITCH					
<b>HUE825</b>	1 element	Standard	900	825	N/A
<b>HUE1125</b>	1 element	Standard	1200	1125	N/A
<b>HUE1425</b>	1 element	Standard	1500	1425	N/A
<b>HUE1725</b>	1 element	Standard	1800	1725	N/A

220-240V 50-60Hz.



HUE1125 pictured

## Optional Mount Kit

Mount kit for Quartz and Infra-red series assemblies. The kit includes 2 x 19 mm diameter round tubes, inserts and mounting brackets, with instructions for installation by an electrician. 600 mm tubes can be cut to the desired length once on-site.



HM600 pictured

## Specifications

MODEL	DESCRIPTION	MOUNT TYPE	LENGTH mm
<b>HM600</b>	Mount kit for all Quartz lamps and Infra-red heat assemblies.	Round	600

Fabricator model with HM600 mount kit installed and shortened to the desired length.



## Fluorescent Lighting Assemblies

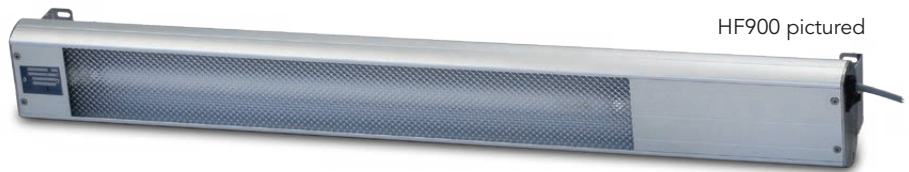
Roband fluorescent lamp assembly profiles match the aluminium extrusion from which the quartz lamp and infra-red assemblies are manufactured.

Specifically designed for use in refrigerated displays or where illumination is required without heat, these units have a diffused perspex cover over the light. They also feature a simple mounting system and come complete with an isolating switch and a plug and cord.

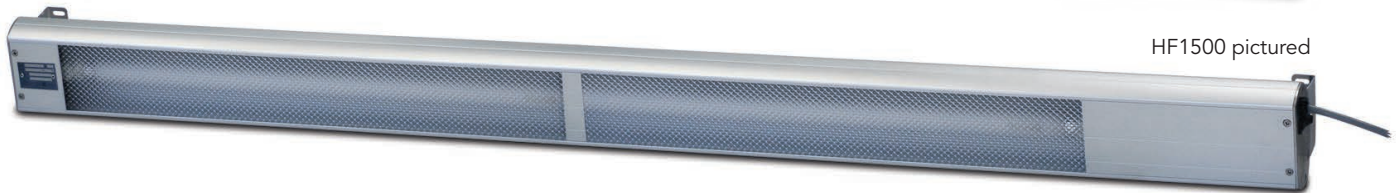
### Specifications - Standard Models (Includes Control Box)

MODEL	DESCRIPTION	POWER Watts	LENGTH mm
<b>HF900</b>	1 fluorescent globe	30	900
<b>HF1500</b>	1 fluorescent globe	45	1500

220-240V 50-60Hz. 



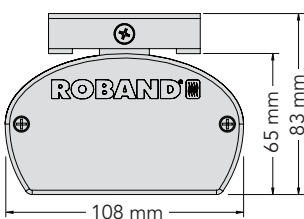
HF900 pictured



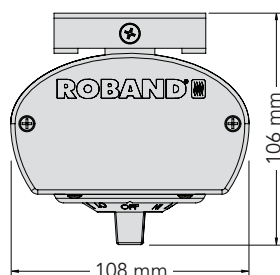
HF1500 pictured



### Dimensions - Standard Models

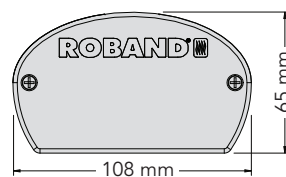


Dimensions for standard quartz lamp and fluorescent lighting assemblies (HQ & HF).



Dimensions for standard infra-red heating assemblies (HE).

### Dimensions - Fabricator Models



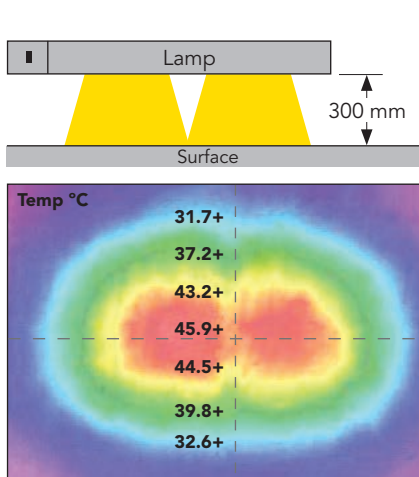
Dimensions for fabricator quartz lamp and infra-red heating assemblies (HUQ & HUE).



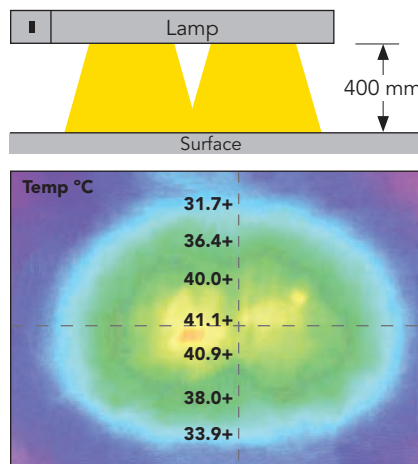
# Heat Specifications

The lamp and heating assemblies are designed to delay the loss of heat from prepared food while waiting to be taken to the table. The thermal images below provide a guide as to heat projection when mounted at various heights. Note these units are not designed to bring food up to serving temperature.

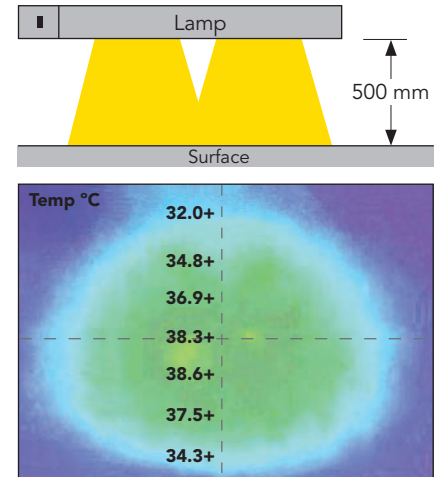
## Quartz Heat Lamp - surface temperature from projected heat - HQ900E\*



Thermal image depicting temperatures in degrees Celsius when HQ900E lamp positioned 300 mm above surface.

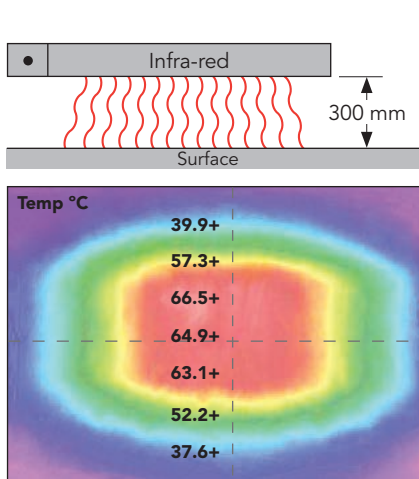


Thermal image depicting temperatures in degrees Celsius when HQ900E lamp positioned 400 mm above surface.

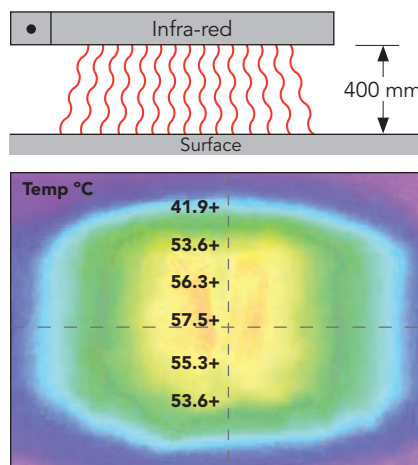


Thermal image depicting temperatures in degrees Celsius when HQ900E lamp positioned 500 mm above surface.

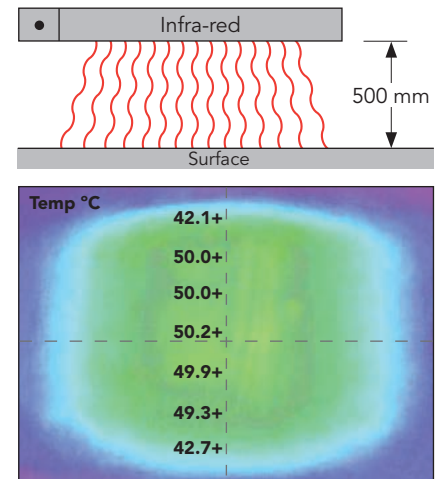
## Infra-Red Heat Assemblies - surface temperature from projected heat - HE900\*



Thermal image depicting temperatures in degrees Celsius when HE900 lamp positioned 300 mm above surface.



Thermal image depicting temperatures in degrees Celsius when HE900 lamp positioned 400 mm above surface.



Thermal image depicting temperatures in degrees Celsius when HE900 lamp positioned 500 mm above surface.

\*These results were recorded in our factory under test conditions at 23°C. Temperatures were recorded on a timber surface. Variations to these temperatures will occur in different ambient conditions and with different food types.

**ROBAND**  
AUSTRALIA PTY LTD

All Roband Lamp Assemblies are designed to run at 220-240V 50-60Hz and are CE approved. All dimensions are nominal only. Constant research and development may necessitate product specification changes at any time. Images © 2015 Roband Australia. ® is a registered trademark of Roband Australia Pty. Ltd.



### Distributed by:

#### Roband Australia Pty Ltd

1 Inman Road  
Cromer, NSW 2099  
Australia  
Tel: +61 2 9971 1788  
Fax: +61 2 9971 1336  
Email: roband@roband.com.au  
www.roband.com.au

#### Roband New Zealand Ltd

Greenmount Drive  
East Tamaki  
New Zealand  
Tel: +64 9 274 1355  
Fax: +64 9 274 1356  
Email: roband@roband.co.nz

#### Roband Europe Ltd

Haygarth Park, Blaenau Ffestiniog  
Gwynedd, North Wales  
LL41 3PF, United Kingdom  
Tel: +44 (0) 1766 830 456  
Fax: +44 (0) 1766 831 170  
Email: info@metcalfcatering.com  
www.metcalfcatering.com

Distributor:

# Heat and Illumination Solutions



**Australian Made - Built To Last - Australian Owned**